

LC, LF, LS Sealed Linear Encoders with slimline scale housing

Sealed linear encoders with **slimline scale housing** are used primarily where installation space is limited.

Absolute linear encoders of the **LC 400** series provide the **absolute position value** without any previous traverse required. Incremental signals can also be provided. Like the **LS 400** series incremental linear encoders, their high accuracy and defined thermal behavior make them especially well suited for use on **numerically controlled machine tools**.

The incremental encoders of the **LF** type feature measuring standards with relatively fine grating periods. This makes them particularly attractive for applications requiring very **high repeatability**.

The **LS 300** series incremental linear encoders are used for simple positioning tasks, for example on **manual machine tools**.

LC 400 Series

- **Absolute position measurement**
- Defined thermal behavior
- Single-field scanning

LS 487

- **Incremental position measurement**
- Defined thermal behavior
- Single-field scanning

LF 481

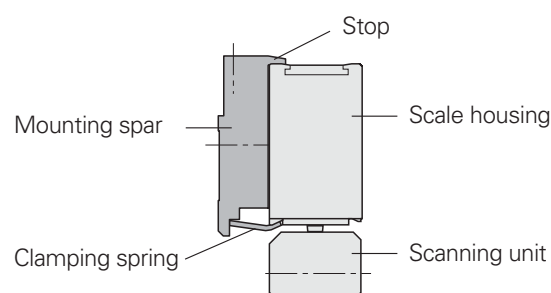
- **Very high repeatability**
- Thermal behavior similar to steel or cast iron
- Single-field scanning

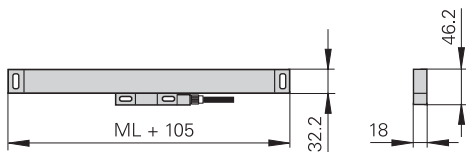
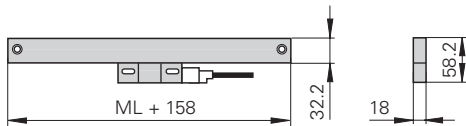
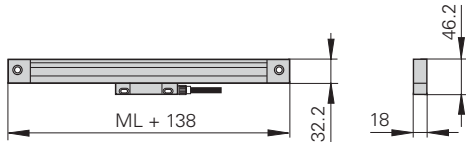
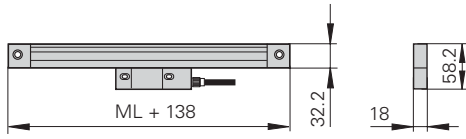
LS 300 Series

- **Typically for manual machines**

Simple installation with mounting spar

The use of a mounting spar can be of great benefit when mounting slimline linear encoders. They can be fastened as part of the machine assembly process. The encoder is then simply clamped on during final mounting. Easy exchange also facilitates servicing.





	Absolute	Incremental		
	LC 483 LC 493 F/M	LF 481	LS 487 LS 477	LS 388C LS 328C
Measuring standard	DIADUR glass scale	DIADUR phase grating on steel	DIADUR glass scale	DIADUR glass scale
Incremental signals	Optional for LC 483	~ 1 V _{PP}	LS 487: ~ 1 V _{PP} LS 477: □□TTL	LS 388C: ~ 1 V _{PP} LS 328C: □□TTL
Signal period	20 μm	4 μm	20 μm LS 477: 4 μm/2 μm	20 μm
Absolute position values	EnDat 2.2 Fanuc/Mitsubishi	-		
Accuracy grade	± 5 μm, ± 3 μm	± 3 μm, ± 2 μm		± 10 μm
Recommended measuring step	0.05 to 0.005 μm ¹⁾	1 to 0.1 μm	1 to 0.1 μm	LS 388C: to 1 μm LS 328C: 5 μm
Meas. lengths ML	70 to 2040 mm ²⁾	50 to 1220 mm	70 to 2040 mm ²⁾	70 to 1240 mm
Reference mark	-	One or distance-coded		Distance-coded

¹⁾ Absolute position values ²⁾ over ML 1240 mm only with mounting spar or tensioning element

Representante oficial de:



HEIDENHAIN

[Argentina – Bolivia – Chile – Colombia - Costa Rica – Ecuador - El Salvador –
Guatemala – Honduras – Nicaragua – Panamá – Paraguay – Perú -
República Dominicana – Uruguay – Venezuela.]



Calle 49 N° 5764 - Villa Ballester (B1653AOX) - Prov. de Buenos Aires - ARGENTINA
Tel: (+54 11) 4768-4242 / Fax: (+54 11) 4849-1212
Mail: ventas@nakase.com.ar / Web: www.nakase.com.ar

